



## PRINCE SHRI VENKATESWARA ARTS AND SCIENCE COLLEGE

Gowrivakkam, Chennai-600073.

Affiliated to University of Madras

### FACULTY FEEDBACK ON SYLLABUS – ANALYSIS REPORT

Academic Year

2018-19

Department

B.Sc. Biochemistry

Number of Respondents

4

Rate the curriculum / syllabus on the following points

S. No	Feedback on Syllabus	Excellent	Very good	Good	Average	Below Average
		5	4	3	2	1
1	Is the course objective are illustrated clearly to the need of the students?	0	3	1	0	0
2	Are you satisfied with the existing syllabus which you are handling?	1	2	0	0	1
3	Is the syllabus designed based on average student level?	2	2	0	0	0
4	Is the syllabus providing the basic knowledge to carry out the field project/Internship?	3	0	1	0	0
5	Is the curriculum designed by university is more relevant to the department background?	2	2	0	0	0
6	Is the syllabus well organized and easy to follow by the students?	2	1	0	1	0
7	Is the syllabus covered fundamentals, advanced topics and ensures balance between theory & Applications	1	3	0	0	0



*B. Kalpana*  
PRINCIPAL

PRINCE SHRI VENKATESHWARA-  
ARTS AND SCIENCE COLLEGE  
GOWRIVAKKAM, CHENNAI - 600 073.-



**PRINCE SHRI VENKATESWARA ARTS AND SCIENCE COLLEGE**

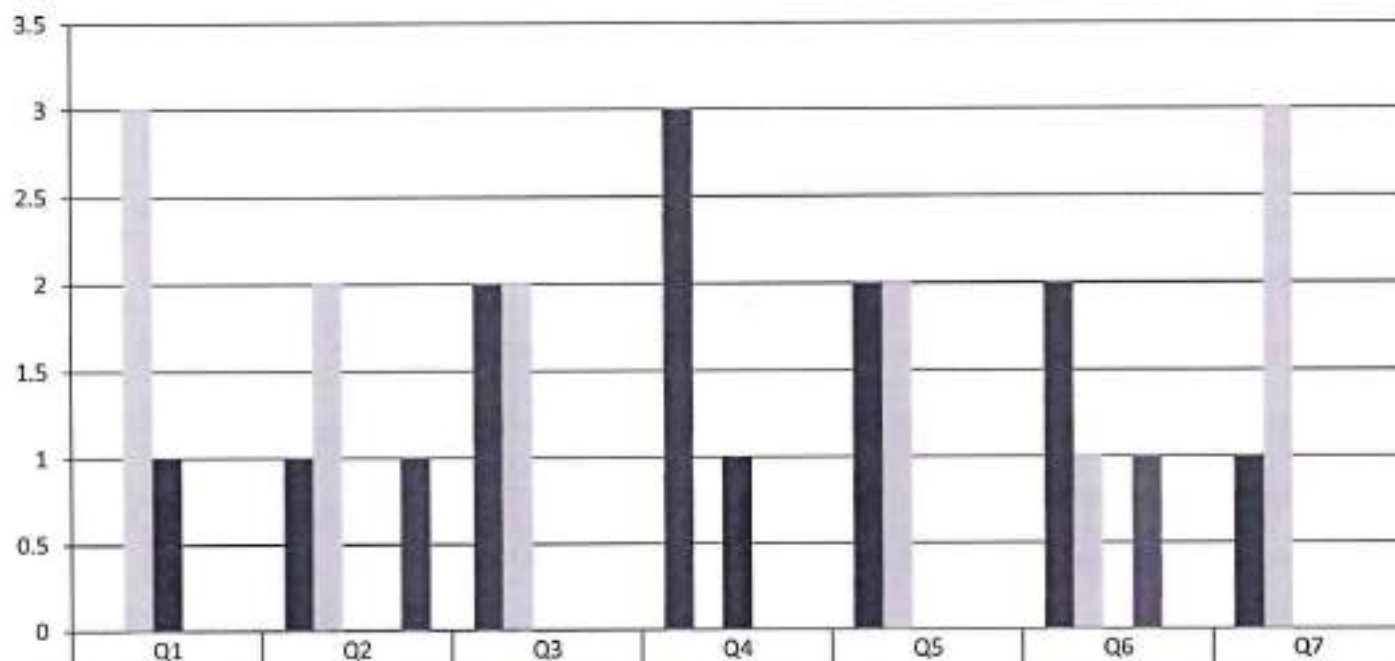
Gowrivakkam, Chennai-600073.

Affiliated to University of Madras

**FACULTY FEEDBACK ON SYLLABUS - 2018-2019**

**B.Sc. BIOCHEMISTRY**

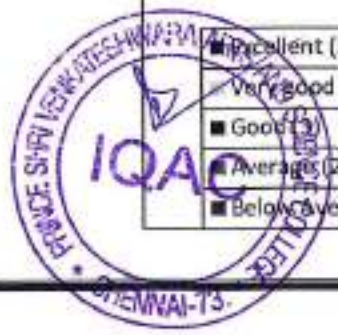
(NUMBER OF RESPONDENTS - 4)



Excellent (5)	0	1	2	3	2	2	1
Very Good (4)	3	2	2	0	2	1	3
Good (3)	1	0	0	1	0	0	0
Average (2)	0	0	0	0	0	0	0
Below Average (1)	0	1	0	0	0	0	0

*B. Kalpana*  
**PRINCIPAL**

**PRINCE SHRI VENKATESHWARA**  
**ARTS AND SCIENCE COLLEGE**  
GOWRIVAKKAM, CHENNAI-600 073.





**PRINCE SHRI VENKATESWARA ARTS AND SCIENCE COLLEGE**

Gowrivakkam, Chennai-600073.

Affiliated to University of Madras

**FACULTY FEEDBACK ON SYLLABUS – ANALYSIS REPORT**

**Academic Year**

2018-19

**Department**

B.Sc.-Microbiology

**Number of Respondents**

3

Rate the curriculum / syllabus on the following points

S. No	Feedback on Syllabus	Excellent	Very good	Good	Average	Below Average
		5	4	3	2	1
1	Is the course objective are illustrated clearly to the need of the students?	2	1	0	0	0
2	Are you satisfied with the existing syllabus which you are handling?	2	0	1	0	0
3	Is the syllabus designed based on average student level?	1	2	0	0	0
4	Is the syllabus providing the basic knowledge to carry out the field project/Internship?	2	0	0	1	0
5	Is the curriculum designed by university is more relevant to the department background?	2	0	1	0	0
6	Is the syllabus well organized and easy to follow by the students?	0	2	1	0	0
7	Is the syllabus covered fundamentals, advanced topics and ensures balance between theory & Applications	1	2	0	0	0



*B. Kalpana*  
**PRINCIPAL**  
PRINCE SHRI VENKATESHWARA  
ARTS AND SCIENCE COLLEGE  
GOWRIVAKKAM, CHENNAI-600 073.



**PRINCE SHRI VENKATESWARA ARTS AND SCIENCE COLLEGE**

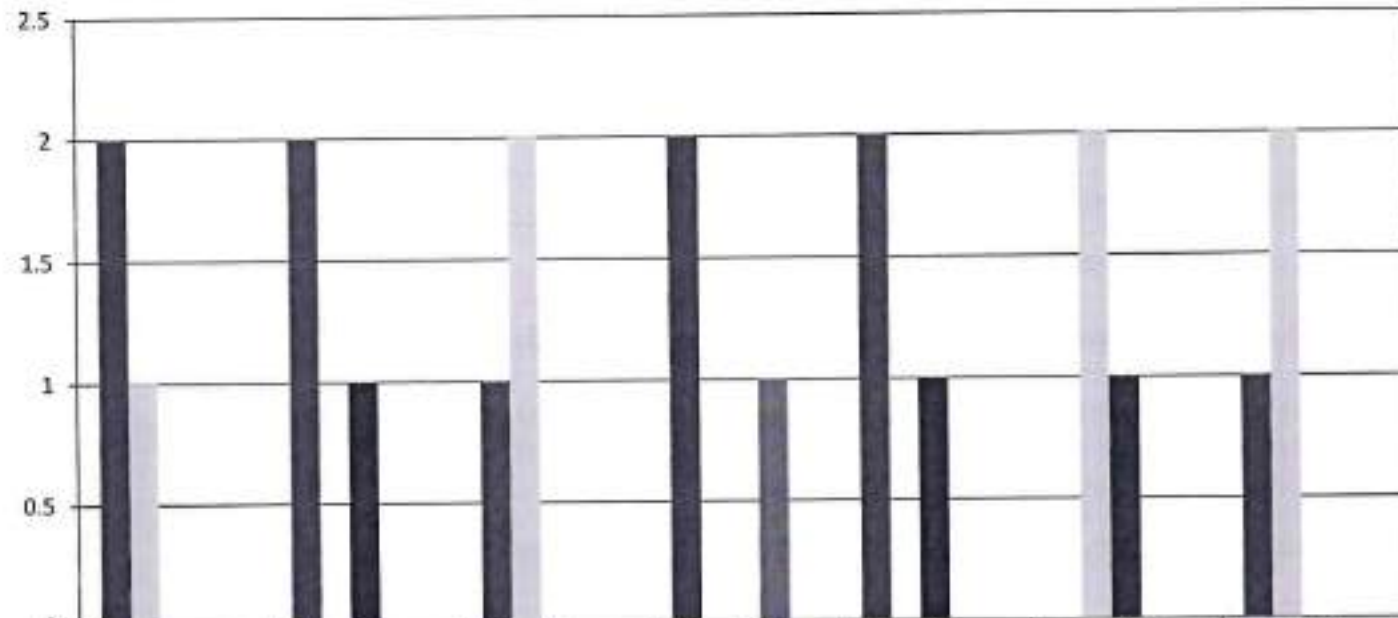
Gowrivakkam, Chennai-600073.

Affiliated to University of Madras

**FACULTY FEEDBACK ON SYLLABUS - 2018-2019**

**B.Sc. MICROBIOLOGY**

(NUMBER OF RESPONDENTS - 3)



	Q1	Q2	Q3	Q4	Q5	Q6	Q7
Excellent (5)	2	2	1	2	2	0	1
Very good (4)	1	0	2	0	0	2	2
Good (3)	0	1	0	0	1	1	0
Average (2)	0	0	0	1	0	0	0
Below Average (1)	0	0	0	0	0	0	0



*B. Kalpana*  
**PRINCIPAL**  
 PRINCE SHRI VENKATESHWARA  
 ARTS AND SCIENCE COLLEGE  
 GOWRIVAKKAM, CHENNAI-600 073.



## PRINCE SHRI VENKATESWARA ARTS AND SCIENCE COLLEGE

Gowrivakkam, Chennai-600073.

Affiliated to University of Madras

### FACULTY FEEDBACK ON SYLLABUS – ANALYSIS REPORT

Academic Year

2018-19

Department

B.Sc. Electronics and Communication Science

Number of Respondents

2

Rate the curriculum / syllabus on the following points

S. No	Feedback on Syllabus	Excellent	Very good	Good	Average	Below Average
		5	4	3	2	1
1	Is the course objective are illustrated clearly to the need of the students?	2	0	0	0	0
2	Are you satisfied with the existing syllabus which you are handling?	1	0	0	1	0
3	Is the syllabus designed based on average student level?	1	1	0	0	0
4	Is the syllabus providing the basic knowledge to carry out the field project/Internship?	2	0	0	0	0
5	Is the curriculum designed by university is more relevant to the department background?	2	0	0	0	0
6	Is the syllabus well organized and easy to follow by the students?	2	0	0	0	0
7	Is the syllabus covered fundamentals, advanced topics and ensures balance between theory & Applications	1	0	1	0	0



*B. Kalpane*  
**PRINCIPAL**

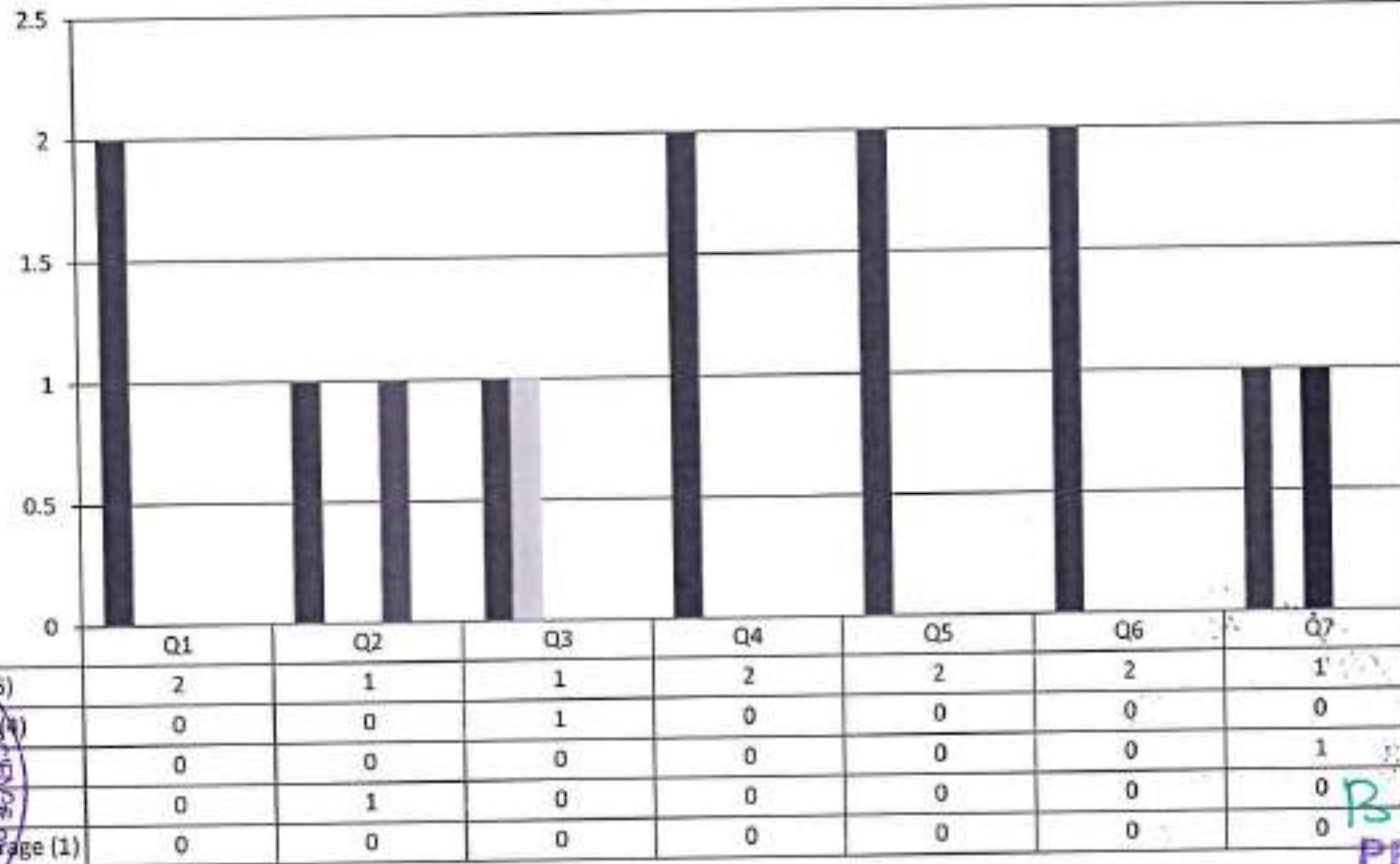
PRINCE SHRI VENKATESHWARA  
ARTS AND SCIENCE COLLEGE

GOWRIVAKKAM, CHENNAI-600 073



**PRINCE SHRI VENKATESWARA ARTS AND SCIENCE COLLEGE**  
 Gowrivakkam, Chennai-600073.  
 Affiliated to University of Madras

**FACULTY FEEDBACK ON SYLLABUS - 2018-2019**  
**B.Sc. ELECTRONICS AND COMMUNICATION SCIENCE**  
 (NUMBER OF RESPONDENTS - 2)



*B. Kalpana*  
**PRINCIPAL**  
 PRINCE SHRI VENKATESWARA  
 ARTS AND SCIENCE COLLEGE  
 GOWRIVAKKAM, CHENNAI - 600073



## PRINCE SHRI VENKATESWARA ARTS AND SCIENCE COLLEGE

Gowrivakkam, Chennai-600073.

Affiliated to University of Madras

### FACULTY FEEDBACK ON SYLLABUS – ANALYSIS REPORT

Academic Year

2018-19

Department

B.Sc.-Computer Science

Number of Respondents

16

Rate the curriculum / syllabus on the following points

S. No	Feedback on Syllabus	Excellent	Very good	Good	Average	Below Average
		5	4	3	2	1
1	Is the course objective are illustrated clearly to the need of the students?	5	7	3	1	0
2	Are you satisfied with the existing syllabus which you are handling?	6	7	2	1	0
3	Is the syllabus designed based on average student level?	8	6	2	0	0
4	Is the syllabus providing the basic knowledge to carry out the field project/Internship?	6	7	3	0	0
5	Is the curriculum designed by university is more relevant to the department background?	7	6	2	1	0
6	Is the syllabus well organized and easy to follow by the students?	9	4	3	0	0
7	Is the syllabus covered fundamentals, advanced topics and ensures balance between theory & Applications	5	7	3	1	0



*B. Kalpana*  
**PRINCIPAL**  
PRINCE SHRI VENKATESWARA  
ARTS AND SCIENCE COLLEGE  
GOWRIVAKKAM, CHENNAI-600073



**PRINCE SHRI VENKATESWARA ARTS AND SCIENCE COLLEGE**

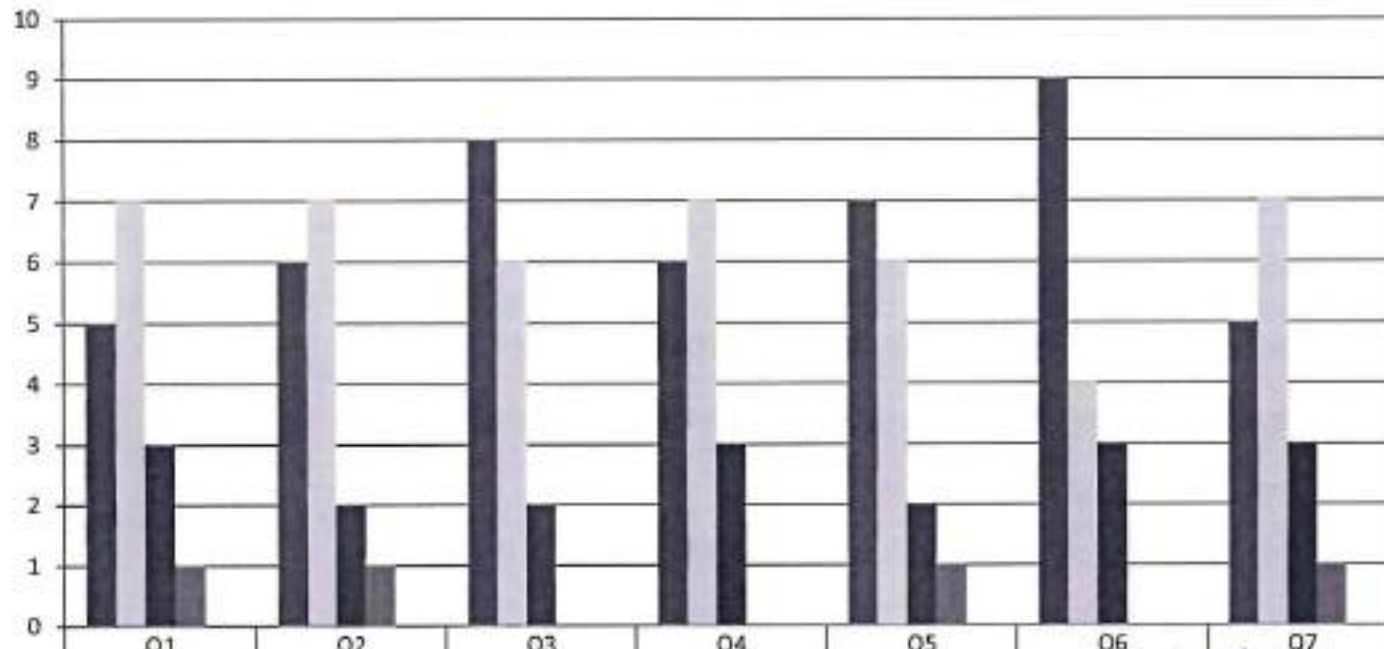
Gowrivakkam, Chennai-600073.

Affiliated to University of Madras

**FACULTY FEEDBACK ON SYLLABUS - 2018-2019**

**B.Sc. COMPUTER SCIENCE**

(NUMBER OF RESPONDENTS - 16)



■ Excellent (5)	5	6	8	6	7	9	5
■ Very good (4)	7	7	6	7	6	4	7
■ Good (3)	3	2	2	3	2	3	3
■ Average (2)	1	1	0	0	1	0	0
■ Below Average (1)	0	0	0	0	0	0	0

*B. Kalpana*  
**PRINCIPAL**

**PRINCE SHRI VENKATESHWARA  
ARTS AND SCIENCE COLLEGE  
GOWRIVAKKAM, CHENNAI-600 073.**





## PRINCE SHRI VENKATESWARA ARTS AND SCIENCE COLLEGE

Gowrivakkam, Chennai-600073.

Affiliated to University of Madras

### FACULTY FEEDBACK ON SYLLABUS – ANALYSIS REPORT

Academic Year

2018-19

Department

B. Com-General

Number of Respondents

14

Rate the curriculum / syllabus on the following points

S. No	Feedback on Syllabus	Excellent	Very good	Good	Average	Below Average
		5	4	3	2	1
1	Is the course objective are illustrated clearly to the need of the students?	11	2	0	0	1
2	Are you satisfied with the existing syllabus which you are handling?	6	7	1	0	0
3	Is the syllabus designed based on average student level?	4	8	2	0	0
4	Is the syllabus providing the basic knowledge to carry out the field project/Internship?	6	5	3	0	0
5	Is the curriculum designed by university is more relevant to the department background?	6	5	2	1	0
6	Is the syllabus well organized and easy to follow by the students?	8	6	0	0	0
7	Is the syllabus covered fundamentals, advanced topics and ensures balance between theory & Applications	7	4	3	0	0

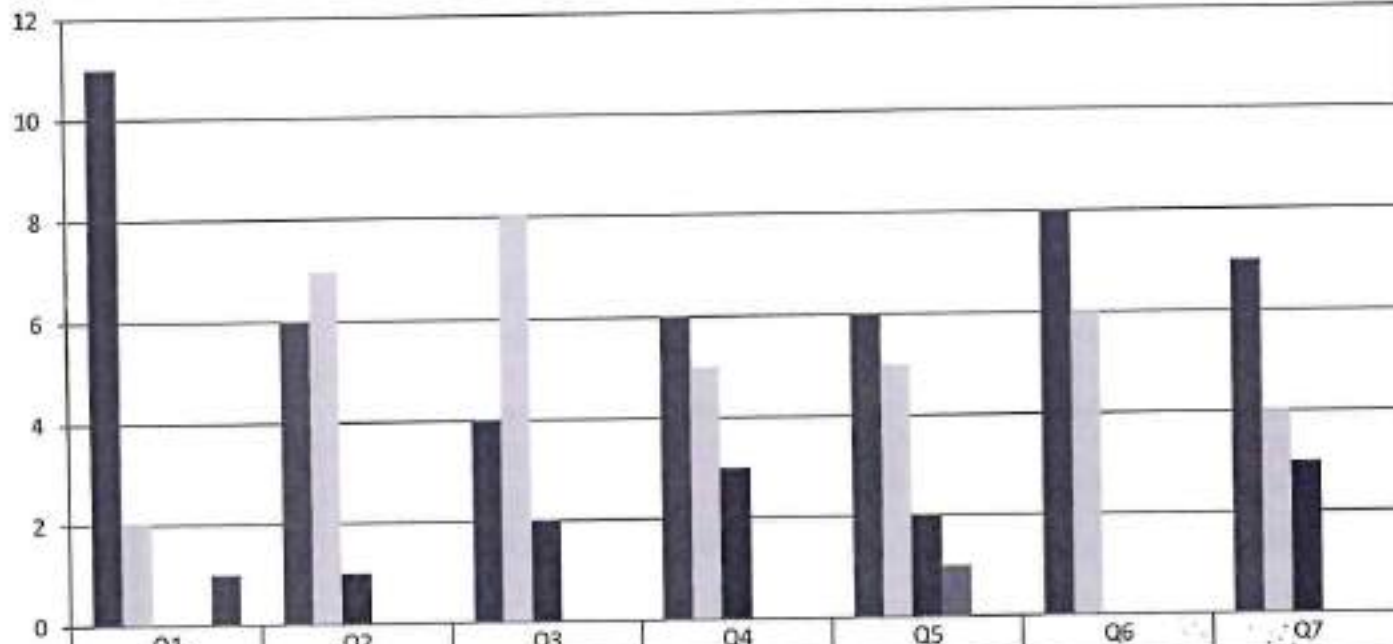


*B. Kalpane*  
**PRINCIPAL**  
PRINCE SHRI VENKATESHWARA  
ARTS AND SCIENCE COLLEGE  
GOWRIVAKKAM, CHENNAI-600 073.



**PRINCE SHRI VENKATESWARA ARTS AND SCIENCE COLLEGE**  
 Gowrivakkam, Chennai-600073.  
 Affiliated to University of Madras

**FACULTY FEEDBACK ON SYLLABUS - 2018-2019**  
**B.COM (GENERAL)**  
 (NUMBER OF RESPONDENTS - 14)



	Q1	Q2	Q3	Q4	Q5	Q6	Q7
Excellent (5)	11	6	4	6	6	8	7
Very Good (4)	2	7	8	5	5	6	4
Good (3)	0	1	2	3	2	0	3
Average (2)	0	0	0	0	1	0	0
Below Average (1)	1	0	0	0	0	0	0



*B. Kalpana*  
**PRINCIPAL**  
 PRINCE SHRI VENKATESHWARA  
 ARTS AND SCIENCE COLLEGE  
 GOWRIVAKKAM, CHENNAI-600 073.



## PRINCE SHRI VENKATESWARA ARTS AND SCIENCE COLLEGE

Gowrivakkam, Chennai-600073.

Affiliated to University of Madras

### FACULTY FEEDBACK ON SYLLABUS – ANALYSIS REPORT

Academic Year 2018-19

Department BCA

Number of Respondents 12

Rate the curriculum / syllabus on the following points

S. No	Feedback on Syllabus	Excellent	Very good	Good	Average	Below Average
		5	4	3	2	1
1	Is the course objective are illustrated clearly to the need of the students?	6	3	3	0	0
2	Are you satisfied with the existing syllabus which you are handling?	6	3	2	1	0
3	Is the syllabus designed based on average student level?	8	4	0	0	0
4	Is the syllabus providing the basic knowledge to carry out the field project/Internship?	7	2	3	0	0
5	Is the curriculum designed by university is more relevant to the department background?	8	1	2	1	0
6	Is the syllabus well organized and easy to follow by the students?	5	3	3	1	0
7	Is the syllabus covered fundamentals, advanced topics and ensures balance between theory & Applications	10	1	1	0	0



*B. Kalpana*  
**PRINCIPAL**

PRINCE SHRI VENKATESHWARA  
ARTS AND SCIENCE COLLEGE

GOWRIVARRAM, CHENNAI-600 073.



**PRINCE SHRI VENKATESWARA ARTS AND SCIENCE COLLEGE**

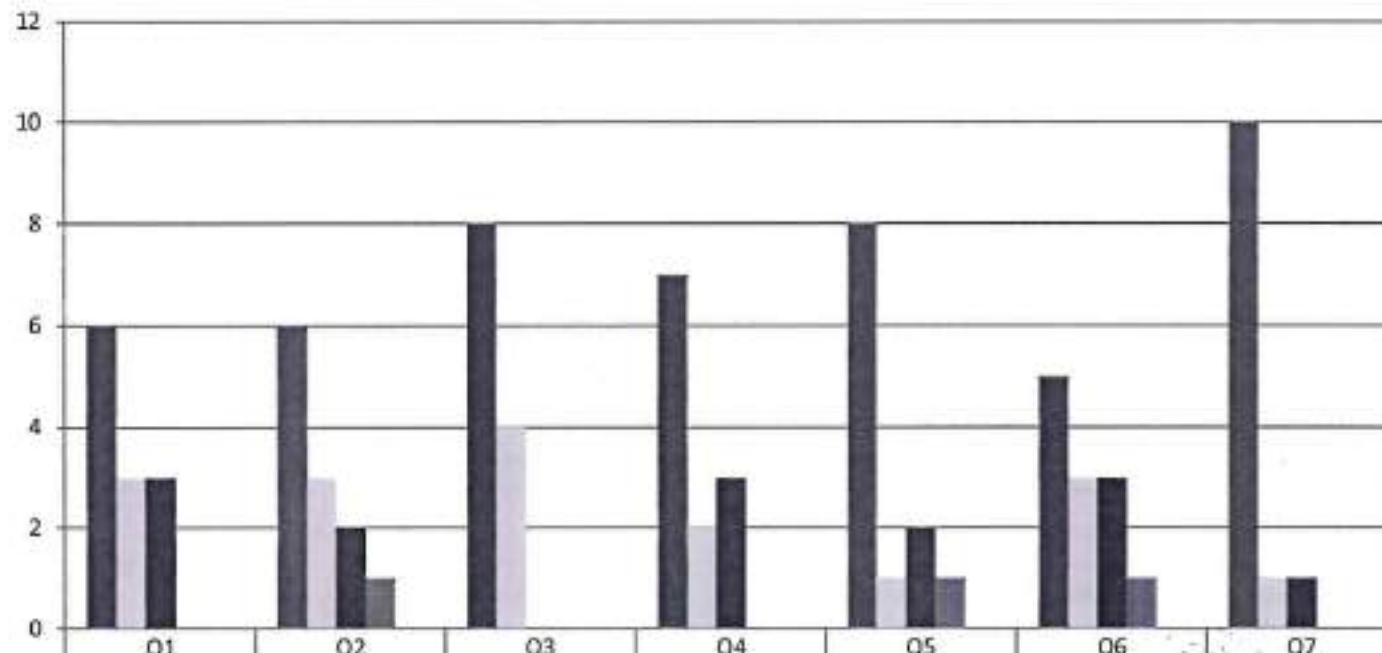
Gowrivakkam, Chennai-600073.

Affiliated to University of Madras

**FACULTY FEEDBACK ON SYLLABUS - 2018-2019**

**BCA**

(NUMBER OF RESPONDENTS - 12)



Feedback Category	Q1	Q2	Q3	Q4	Q5	Q6	Q7
Excellent (5)	6	6	8	7	8	5	10
Very Good (4)	3	3	4	2	1	3	1
Good (3)	3	2	0	3	2	3	1
Average (2)	0	1	0	0	1	1	0
Below Average (1)	0	0	0	0	0	0	0



*B. Kalpana*  
**PRINCIPAL**

**PRINCE SHRI VENKATESHWARA**

**ARTS AND SCIENCE COLLEGE**

**GOWRIVAKKAM CHENNAI-600 073.**



## PRINCE SHRI VENKATESWARA ARTS AND SCIENCE COLLEGE

Gowrivaldam, Chennai-600073.

Affiliated to University of Madras

### FACULTY FEEDBACK ON SYLLABUS – ANALYSIS REPORT

Academic Year

2018-19

Department

B.Sc.-Biotechnology

Number of Respondents

6

Rate the curriculum / syllabus on the following points

S. No	Feedback on Syllabus	Excellent	Very good	Good	Average	Below Average
		5	4	3	2	1
1	Is the course objective are illustrated clearly to the need of the students?	5	0	0	0	1
2	Are you satisfied with the existing syllabus which you are handling?	1	4	1	0	0
3	Is the syllabus designed based on average student level?	0	4	2	0	0
4	Is the syllabus providing the basic knowledge to carry out the field project/Internship?	1	2	3	0	0
5	Is the curriculum designed by university is more relevant to the department background?	1	2	2	1	0
6	Is the syllabus well organized and easy to follow by the students?	3	3	0	0	0
7	Is the syllabus covered fundamentals, advanced topics and ensures balance between theory & Applications	2	1	3	0	0



*B. Kalpana*  
**PRINCIPAL**  
PRINCE SHRI VENKATESHWARA  
ARTS AND SCIENCE COLLEGE  
GOWRIVARAM, CHENNAI-600 073.



PRINCE SHRI VENKATESWARA ARTS AND SCIENCE COLLEGE

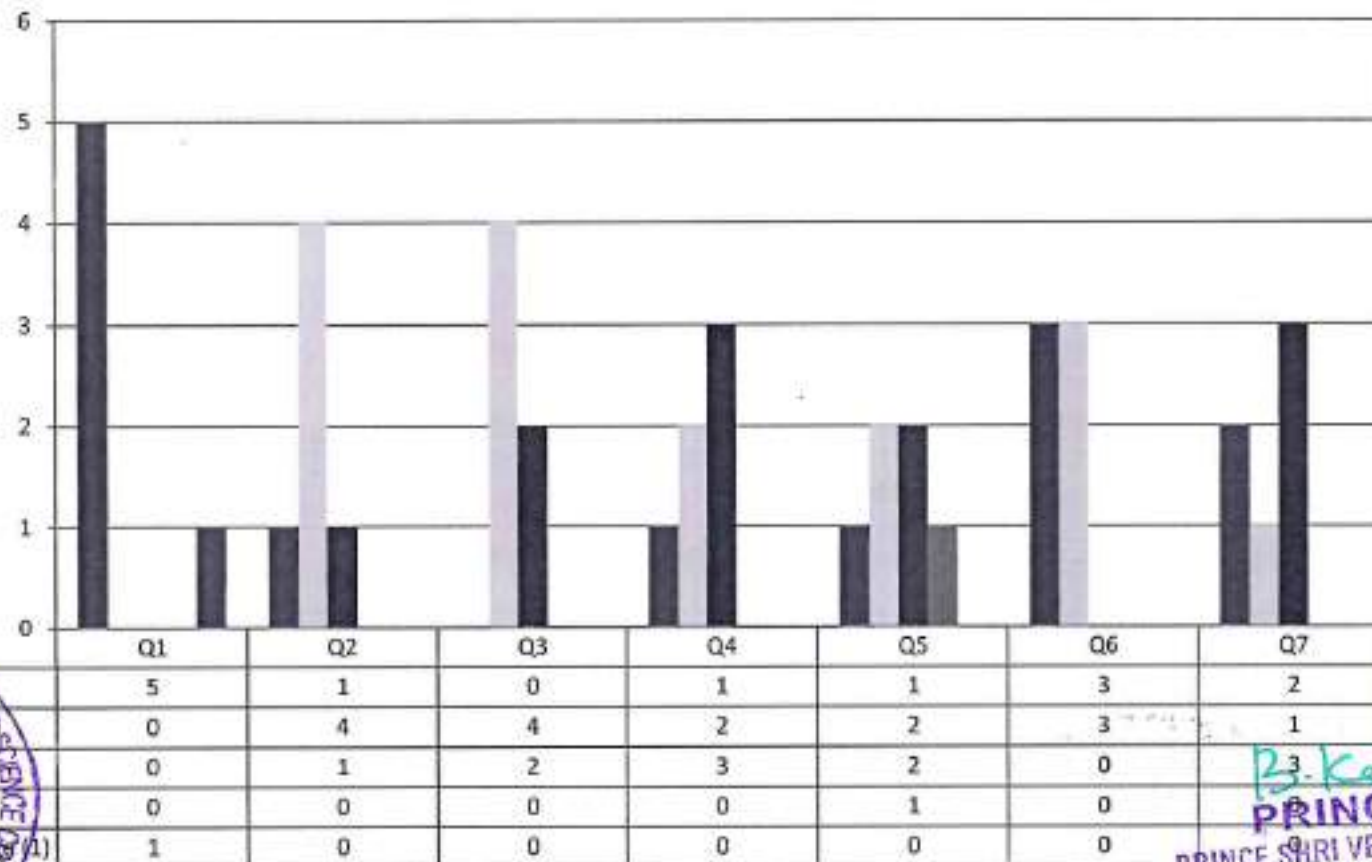
Gowrivakkam, Chennai-600073.

Affiliated to University of Madras

### FACULTY FEEDBACK ON SYLLABUS - 2018-2019

#### B.Sc. BIOTECHNOLOGY

(NUMBER OF RESPONDENTS - 6)



*B. Kalpana*  
**PRINCIPAL**  
PRINCE SHRI VENKATESHWARA  
ARTS AND SCIENCE COLLEGE  
GOWRIVAKKAM, CHENNAI-600 073.



**PRINCE SHRI VENKATESWARA ARTS AND SCIENCE COLLEGE**

Gowrivakkam, Chennai-600073.

Affiliated to University of Madras

**FACULTY FEEDBACK ON SYLLABUS – ANALYSIS REPORT**

Academic Year

2018-19

Department

B. Com - Accounting and Finance

Number of Respondents

7

Rate the curriculum / syllabus on the following points

S. No	Feedback on Syllabus	Excellent	Very good	Good	Average	Below Average
		5	4	3	2	1
1	Is the course objective are illustrated clearly to the need of the students?	5	2	0	0	0
2	Are you satisfied with the existing syllabus which you are handling?	2	4	0	1	0
3	Is the syllabus designed based on average student level?	6	0	1	0	0
4	Is the syllabus providing the basic knowledge to carry out the field project/Internship?	3	2	2	0	0
5	Is the curriculum designed by university is more relevant to the department background?	4	2	0	1	0
6	Is the syllabus well organized and easy to follow by the students?	7	0	0	0	0
7	Is the syllabus covered fundamentals, advanced topics and ensures balance between theory & Applications	4	3	0	0	0



*B. Kalyani*  
**PRINCIPAL**  
PRINCE SHRI VENKATESHWARA  
ARTS AND SCIENCE COLLEGE  
GOWRIVAKKAM, CHENNAI-600 073



**PRINCE SHRI VENKATESWARA ARTS AND SCIENCE COLLEGE**

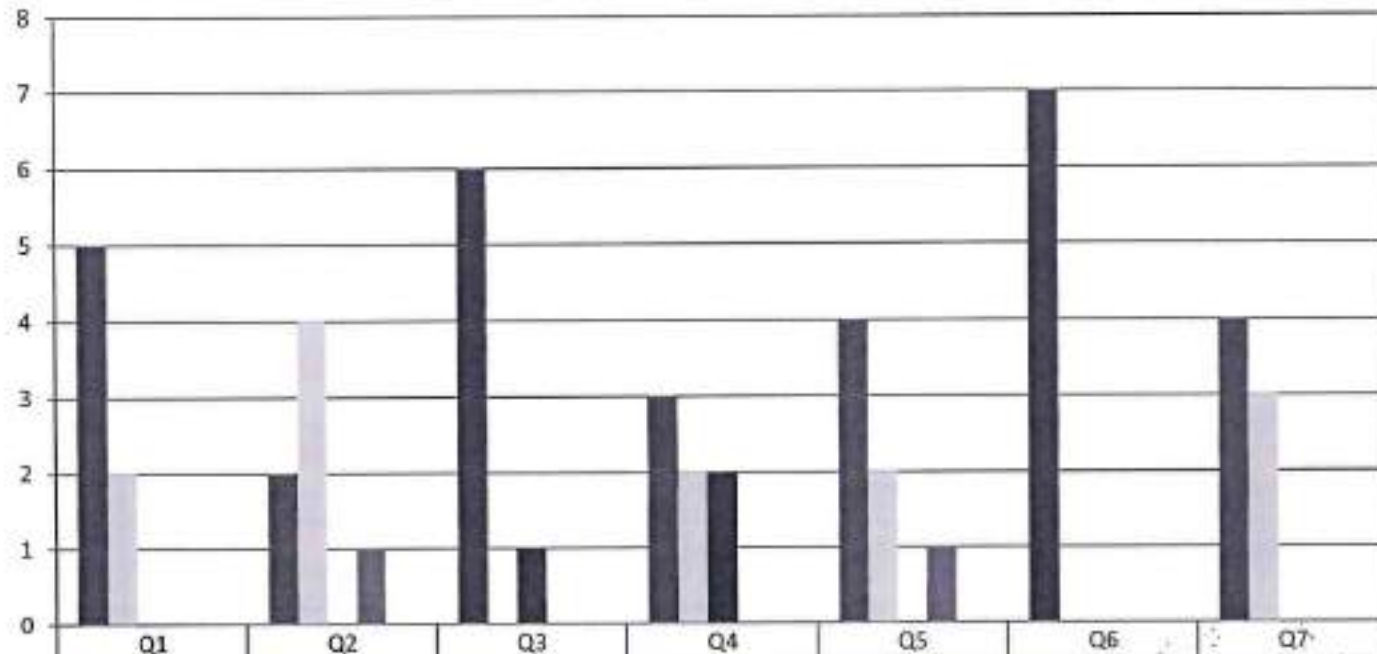
Gowrivakkam, Chennai-600073.

Affiliated to University of Madras

**FACULTY FEEDBACK ON SYLLABUS - 2018-2019**

**B.COM (ACCOUNTING AND FINANCE)**

(NUMBER OF RESPONDENTS - 7)



■ Excellent (5)	5	2	6	3	4	7	4
■ Very good (4)	2	4	0	2	2	0	3
■ Good (3)	0	0	1	2	0	0	0
■ Average (2)	0	1	0	0	1	0	0
■ Below Average (1)	0	0	0	0	0	0	0

*B. Kalman*  
**PRINCIPAL**  
PRINCE SHRI VENKATESHWARA  
ARTS AND SCIENCE COLLEGE  
CHENNAI-600 073.





## PRINCE SHRI VENKATESWARA ARTS AND SCIENCE COLLEGE

Gowrivalakam, Chennai-600073.

Affiliated to University of Madras

### FACULTY FEEDBACK ON SYLLABUS – ANALYSIS REPORT

Academic Year

2018-19

Department

B.A. English

Number of Respondents

4

Rate the curriculum / syllabus on the following points

S. No	Feedback on Syllabus	Excellent	Very good	Good	Average	Below Average
		5	4	3	2	1
1	Is the course objective are illustrated clearly to the need of the students?	3	1	0	0	0
2	Are you satisfied with the existing syllabus which you are handling?	2	1	1	0	0
3	Is the syllabus designed based on average student level?	3	1	0	0	0
4	Is the syllabus providing the basic knowledge to carry out the field project/Internship?	2	1	1	0	0
5	Is the curriculum designed by university is more relevant to the department background?	2	0	2	0	0
6	Is the syllabus well organized and easy to follow by the students?	1	2	1	0	0
7	Is the syllabus covered fundamentals, advanced topics and ensures balance between theory & Applications	2	1	1	0	0



*B. Kalpana*  
**PRINCIPAL**  
PRINCE SHRI VENKATESHWARA  
ARTS AND SCIENCE COLLEGE  
GOWRIVALAKAM, CHENNAI - 600 073.



**PRINCE SHRI VENKATESWARA ARTS AND SCIENCE COLLEGE**

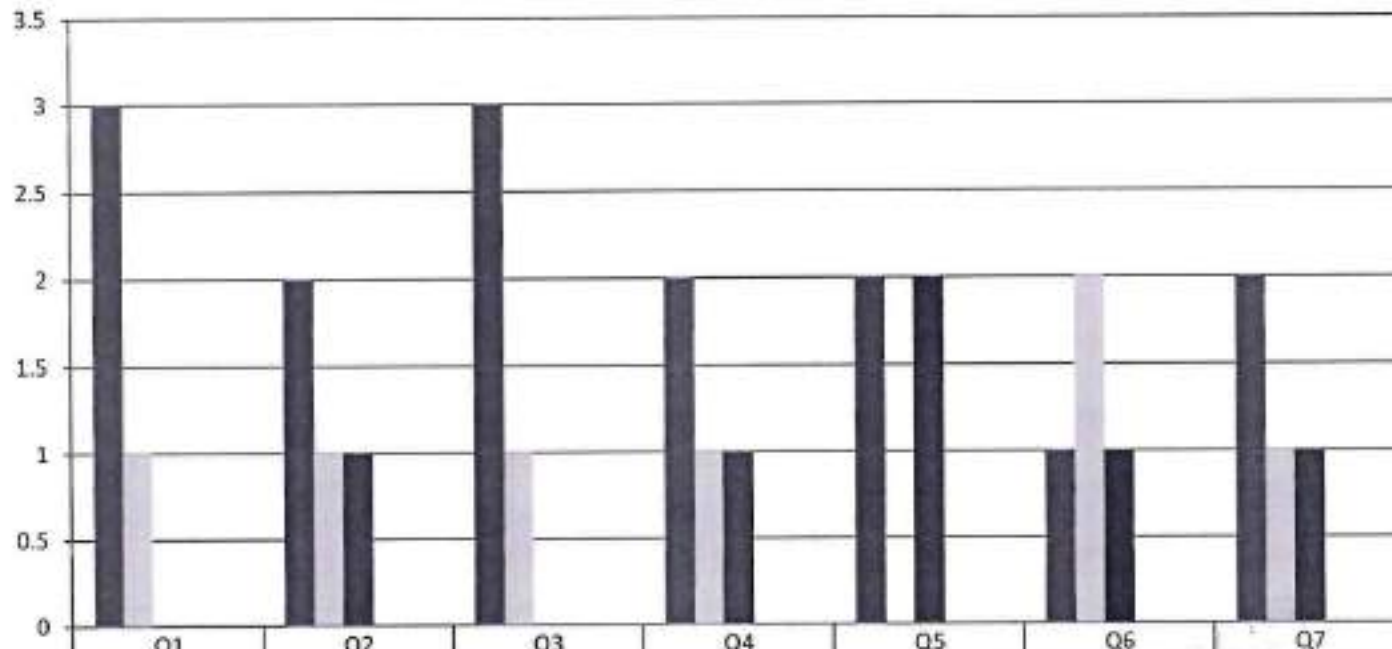
Gowrivakkam, Chennai-600073.

Affiliated to University of Madras

**FACULTY FEEDBACK ON SYLLABUS - 2018-2019**

**B.A. ENGLISH**

(NUMBER OF RESPONDENTS - 4)



	Q1	Q2	Q3	Q4	Q5	Q6	Q7
Excelllent (5)	3	2	3	2	2	1	2
Very good (4)	1	1	1	1	0	2	1
Good (3)	0	1	0	1	2	1	1
Average (2)	0	0	0	0	0	0	0
Below Average (1)	0	0	0	0	0	0	0



*B. Kalpana*  
**PRINCIPAL**  
 PRINCE SHRI VENKATESHWARA  
 ARTS AND SCIENCE COLLEGE  
 GOWRIVAKKAM, CHENNAI-600 073.



## PRINCE SHRI VENKATESWARA ARTS AND SCIENCE COLLEGE

Gowrivakkam, Chennai-600073.

Affiliated to University of Madras

### FACULTY FEEDBACK ON SYLLABUS – ANALYSIS REPORT

Academic Year

2018-19

Department

M.Sc. Microbiology

Number of Respondents

3

Rate the curriculum / syllabus on the following points

S. No	Feedback on Syllabus	Excellent	Very good	Good	Average	Below Average
		5	4	3	2	1
1	Is the course objective are illustrated clearly to the need of the students?	2	1	0	0	0
2	Are you satisfied with the existing syllabus which you are handling?	2	1	0	0	0
3	Is the syllabus designed based on average student level?	1	2	0	0	0
4	Is the syllabus providing the basic knowledge to carry out the field project/Internship?	1	1	0	1	0
5	Is the curriculum designed by university is more relevant to the department background?	1	1	1	0	0
6	Is the syllabus well organized and easy to follow by the students?	0	3	0	0	0
7	Is the syllabus covered fundamentals, advanced topics and ensures balance between theory & Applications	1	1	1	0	0



B. Kalyana  
PRINCIPAL  
PRINCE SHRI VENKATESHWARA  
ARTS AND SCIENCE COLLEGE  
GOWRIVAKKAM, CHENNAI-600 073



**PRINCE SHRI VENKATESWARA ARTS AND SCIENCE COLLEGE**

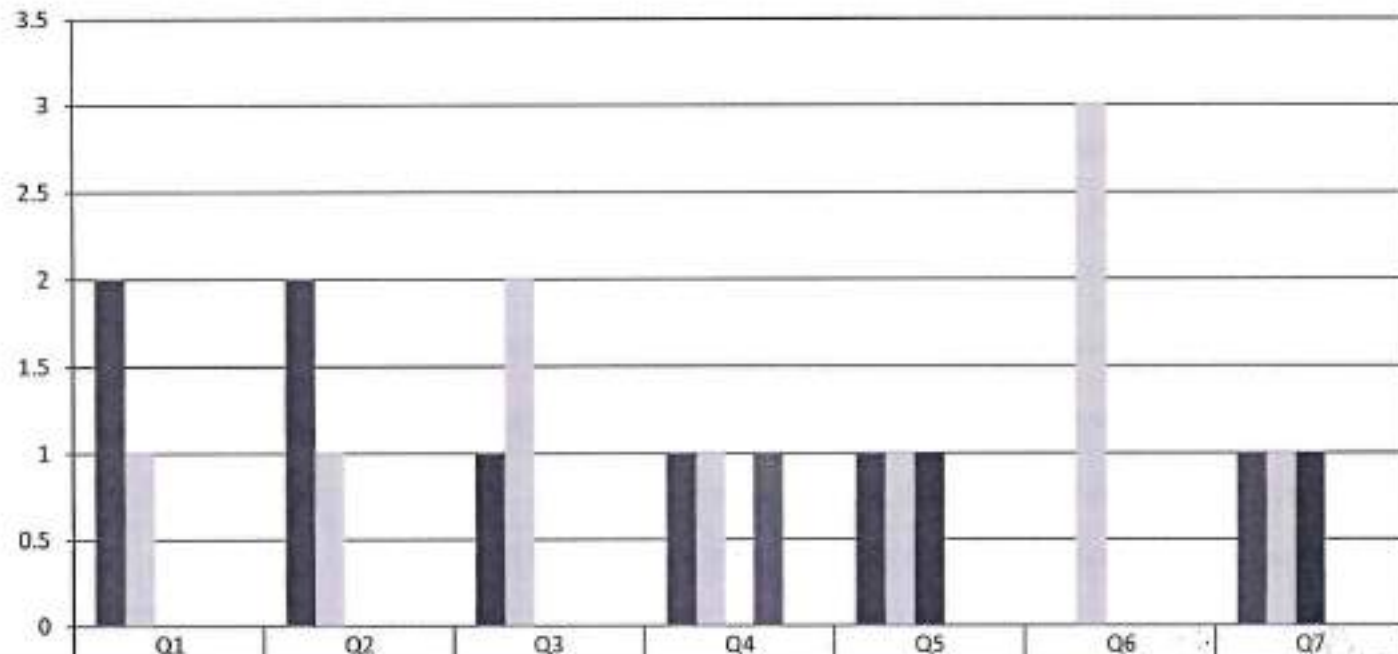
Gowrivakkam, Chennai-600073.

Affiliated to University of Madras

**FACULTY FEEDBACK ON SYLLABUS - 2018-2019**

**M.Sc. MICROBIOLOGY**

(NUMBER OF RESPONDENTS - 3)



	Q1	Q2	Q3	Q4	Q5	Q6	Q7
Excellent (5)	2	2	1	1	1	0	1
Very good (4)	1	1	2	1	1	3	1
Good (3)	0	0	0	0	1	0	1
Average (2)	0	0	0	1	0	0	0
Below Average (1)	0	0	0	0	0	0	0



*B. Kalpana*  
**PRINCIPAL**  
 PRINCE SHRI VENKATESHWARA  
 ARTS AND SCIENCE COLLEGE  
 GOWRIVAKKAM, CHENNAI-600 073



## PRINCE SHRI VENKATESWARA ARTS AND SCIENCE COLLEGE

Gowrivakkam, Chennai-600073.

Affiliated to University of Madras

### FACULTY FEEDBACK ON SYLLABUS – ANALYSIS REPORT

Academic Year

2018-19

Department

M.Sc. Computer Science

Number of Respondents

3

Rate the curriculum / syllabus on the following points

S. No	Feedback on Syllabus	Excellent	Very good	Good	Average	Below Average
		5	4	3	2	1
1	Is the course objective are illustrated clearly to the need of the students?	2	1	0	0	0
2	Are you satisfied with the existing syllabus which you are handling?	1	2	0	0	0
3	Is the syllabus designed based on average student level?	0	2	1	0	0
4	Is the syllabus providing the basic knowledge to carry out the field project/Internship?	1	1	1	0	0
5	Is the curriculum designed by university is more relevant to the department background?	2	0	1	0	0
6	Is the syllabus well organized and easy to follow by the students?	1	2	0	0	0
7	Is the syllabus covered fundamentals, advanced topics and ensures balance between theory & Applications	2	1	0	0	0



*B. Kalpana*  
**PRINCIPAL**  
PRINCE SHRI VENKATESHWARA  
ARTS AND SCIENCE COLLEGE  
GOWRIVAKKAM, CHENNAI-600 073.



**PRINCE SHRI VENKATESWARA ARTS AND SCIENCE COLLEGE**

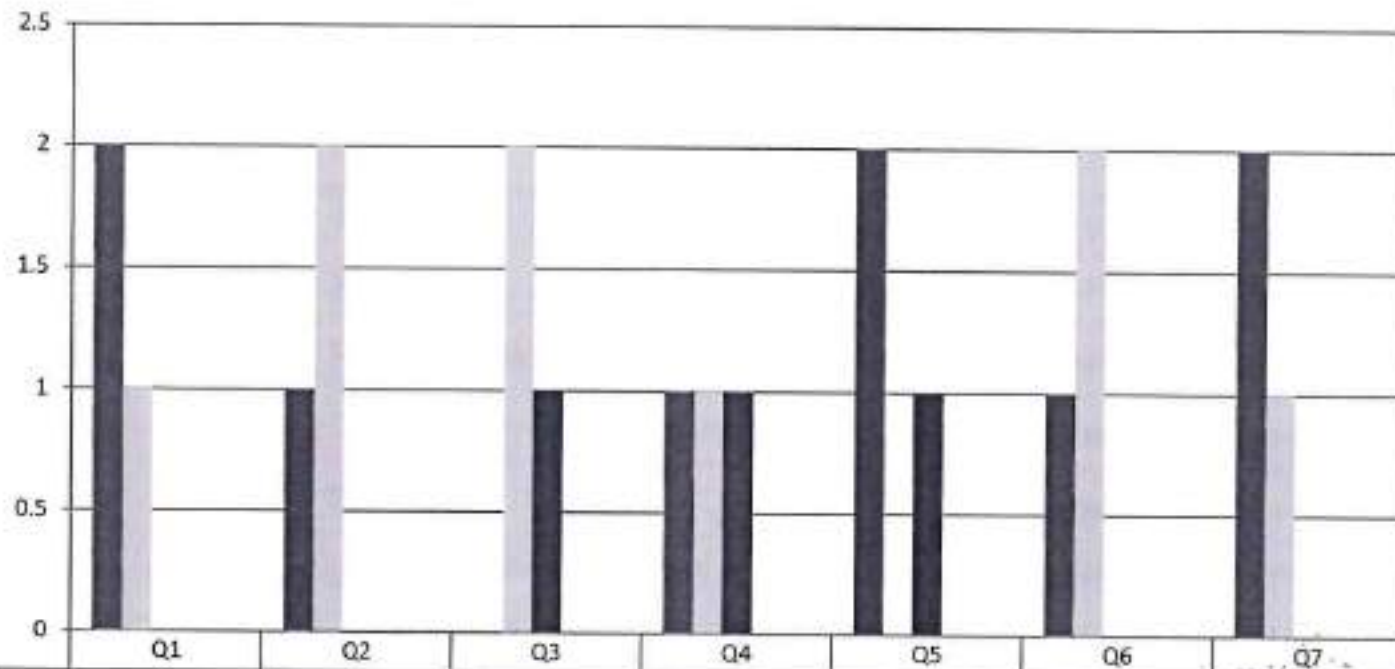
Gowrivakkam, Chennai-600073.

Affiliated to University of Madras

**FACULTY FEEDBACK ON SYLLABUS - 2018-2019**

**M.Sc. COMPUTER SCIENCE**

(NUMBER OF RESPONDENTS - 3)



	Q1	Q2	Q3	Q4	Q5	Q6	Q7
Excellent (5)	2	1	0	1	2	1	2
Very good (4)	1	2	2	1	0	2	1
Good (3)	0	0	1	1	1	0	0
Average (2)	0	0	0	0	0	0	0
Below Average (1)	0	0	0	0	0	0	0



*B. Kalpana*  
**PRINCIPAL**  
PRINCE SHRI VENKATESHWARA  
ARTS AND SCIENCE COLLEGE  
GOWRIVAKKAM, CHENNAI-600 073.



## PRINCE SHRI VENKATESWARA ARTS AND SCIENCE COLLEGE

Gowrivakkam, Chennai-600073.

Affiliated to University of Madras

### FACULTY FEEDBACK ON SYLLABUS – ANALYSIS REPORT

Academic Year

2018-19

Department

M.Sc. Biochemistry

Number of Respondents

2

Rate the curriculum / syllabus on the following points

S. No	Feedback on Syllabus	Excellent	Very good	Good	Average	Below Average
		5	4	3	2	1
1	Is the course objective are illustrated clearly to the need of the students?	2	0	0	0	0
2	Are you satisfied with the existing syllabus which you are handling?	1	1	0	0	0
3	Is the syllabus designed based on average student level?	2	0	0	0	0
4	Is the syllabus providing the basic knowledge to carry out the field project/Internship?	2	0	0	0	0
5	Is the curriculum designed by university is more relevant to the department background?	2	0	0	0	0
6	Is the syllabus well organized and easy to follow by the students?	2	0	0	0	0
7	Is the syllabus covered fundamentals, advanced topics and ensures balance between theory & Applications	1	0	1	0	0



*B. Kalpana*  
**PRINCIPAL**  
PRINCE SHRI VENKATESHWARA  
ARTS AND SCIENCE COLLEGE  
GOWRIVAKKAM, CHENNAI-600 073



**PRINCE SHRI VENKATESWARA ARTS AND SCIENCE COLLEGE**

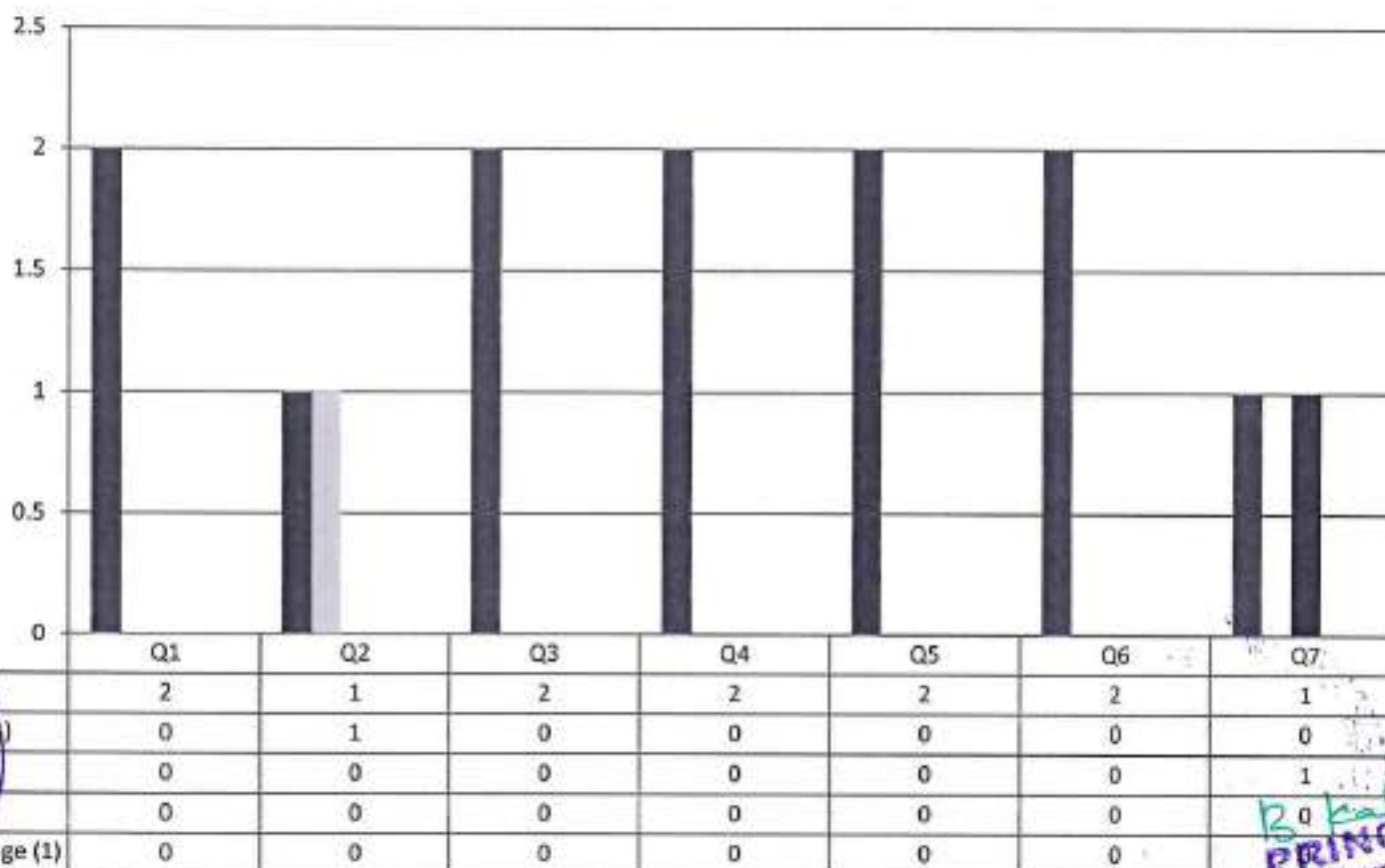
Gowrivaldam, Chennai-600073.

Affiliated to University of Madras

**FACULTY FEEDBACK ON SYLLABUS - 2018-2019**

**M.Sc. BIOCHEMISTRY**

(NUMBER OF RESPONDENTS - 2)



*B. Kalpana*  
**PRINCIPAL**  
PRINCE SHRI VENKATESWARA  
ARTS AND SCIENCE COLLEGE  
GOWRIVAKKAM, CHENNAI-600 073.





## PRINCE SHRI VENKATESWARA ARTS AND SCIENCE COLLEGE

Gowrivakkam, Chennai-600073.

Affiliated to University of Madras

### FACULTY FEEDBACK ON SYLLABUS – ANALYSIS REPORT

Academic Year

2018-19

Department

M.Sc. Biotechnology

Number of Respondents

3

Rate the curriculum / syllabus on the following points

S. No	Feedback on Syllabus	Excellent	Very good	Good	Average	Below Average
		5	4	3	2	1
1	Is the course objective are illustrated clearly to the need of the students?	3	0	0	0	0
2	Are you satisfied with the existing syllabus which you are handling?	1	2	0	0	0
3	Is the syllabus designed based on average student level?	2	1	0	0	0
4	Is the syllabus providing the basic knowledge to carry out the field project/Internship?	2	1	0	0	0
5	Is the curriculum designed by university is more relevant to the department background?	2	0	1	0	0
6	Is the syllabus well organized and easy to follow by the students?	1	2	0	0	0
7	Is the syllabus covered fundamentals, advanced topics and ensures balance between theory & Applications	3	0	0	0	0



*B. Kalpana*  
**PRINCIPAL**  
PRINCE SHRI VENKATESHWARA  
ARTS AND SCIENCE COLLEGE  
GOWRIVAKKAM, CHENNAI-600 073.



# PRINCE SHRI VENKATESWARA ARTS AND SCIENCE COLLEGE

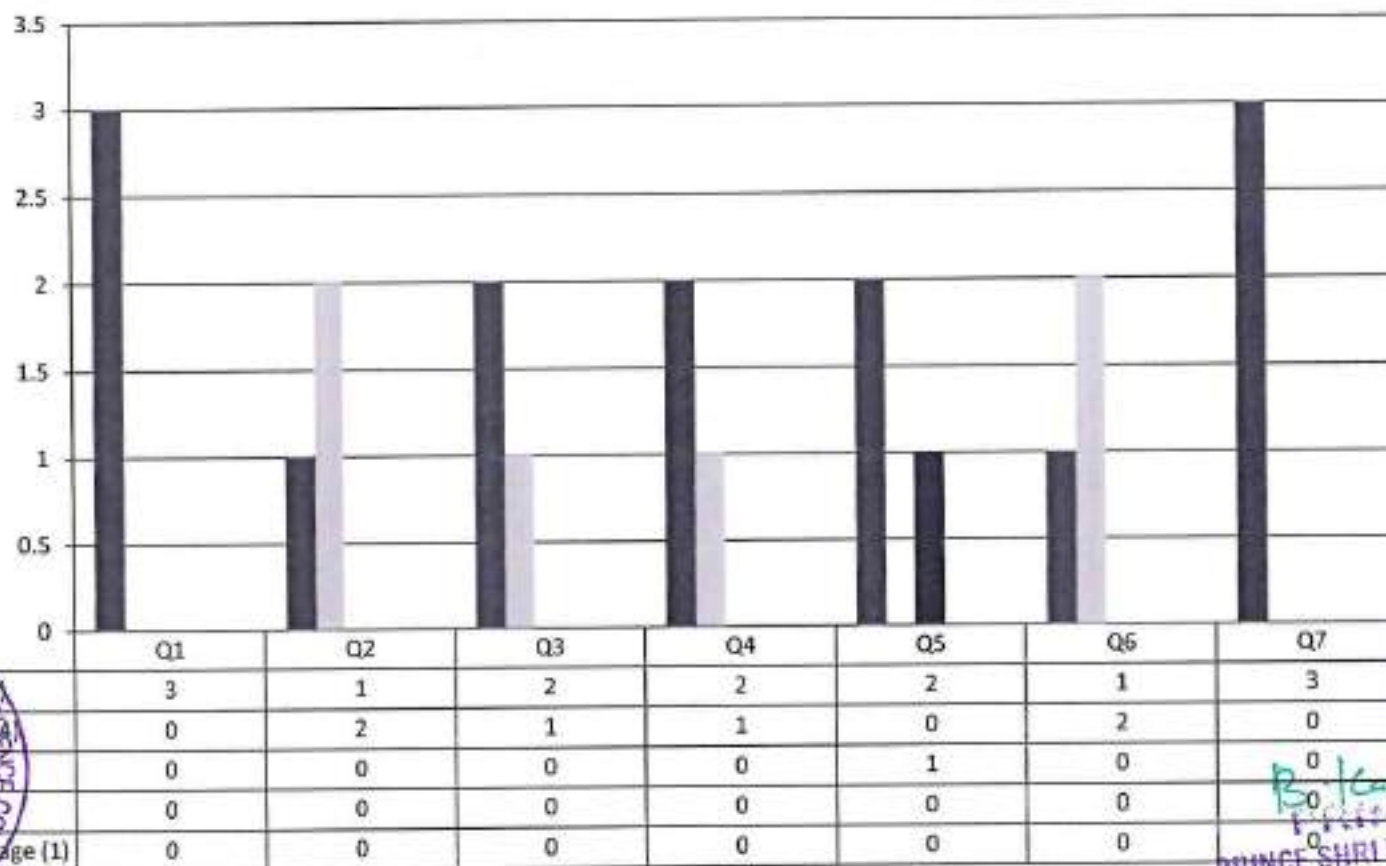
Gowrivakkam, Chennai-600073.

Affiliated to University of Madras

## FACULTY FEEDBACK ON SYLLABUS - 2018-2019

### M.Sc. BIOTECHNOLOGY

(NUMBER OF RESPONDENTS - 3)



*B. Kalpana*  
PRINCE SHRI VENKATESHWARA  
ARTS AND SCIENCE COLLEGE  
GOWRIVAKKAM, CHENNAI-600 073.